

Why Global Shop Solutions?

Global Shop
One-System
ERP Solutions™

When considering ERP software, three basic questions come to mind. Is the software easy to use? Will the technology help streamline my business? Will the vendor be there when you need them? With Global Shop Solutions, the answer to all three questions is undeniably yes!

Ease of use

Global Shop Solutions is intuitive and easy to use. From one basic screen, employees can access everything they need to know about a job, part, customer or sales order. From there, they can drill down to acquire as much detail as needed with just a few clicks of the mouse. And with Global Shop Solutions' powerful single-entry feature, you enter the data one time and one time only. Any changes to the data are automatically updated throughout the entire system. Ask our customers who have switched to Global Shop Solutions from other ERP systems. They'll tell you that ERP software doesn't get any easier than this.

Technology that matters

Built around the SQL platform and backed by dependable performance for thousands of users, Global Shop's technology is extremely reliable and delivers the results you need on a daily basis. Global Shop's technology contributes to our many successful customers' bottom line. They consistently deliver quality products on time, manage constraints, make accurate business decisions, and experience lean office environments – all geared to make their businesses more profitable. Yours can be, too!

Popular packages such as Excel™, Crystal Reports™, ADP™, SolidWorks™, and AutoCad™ are seamlessly incorporated. And when you need something beyond our standard applications, the GS Global Application Builder™ allows virtually unlimited customization to fit the specific needs of your business. Designed and built by manufacturing experts, Global Shop Solutions invests in and delivers technology that works for you. Why risk your business on anything less?

Company stability

Founded in 1976, Global Shop's ownership has not changed hands in 31 years. As a result, we offer what other ERP companies can't – continuity of product and personnel, consistency of service and support, and customer-focused innovation. As a privately-held company, we own, design, develop and fully support all our software products. Most of our senior consultants have more than 10 years' experience with our firm, and each senior FastStart™ Consultant has successfully implemented more than 100 installations. We staff a field office in Panama City, Panama, to service our customers in Latin America. At Global Shop Solutions, we'll be here when you need us – today, tomorrow and into the future.



"ATD Precision uses the most advanced computer systems available today. Our entire operation - from customer service, sales, and engineering through the shop floor - is networked together. With Global Shop software, the status of our customer's current order is at our fingertips. So we will always be able to receive quick, real-time information about the project - a valuable efficiency that saves time and money."

*Ray Almekinder
ATD Precision*

Designed to *Streamline*™

GLOBAL SHOP
SOLUTIONS

"We found the Global Shop Windows™ software easy to use and we were able to bring it up quickly."

Phyllis Edwards
C. E. Smith Company

Global Shop One-System ERP Solutions™

Global Shop Solutions puts you in control of your business. By serving as a central organizing hub for your entire business, Global Shop Solutions allows employees to do their jobs more efficiently and management to make better-informed, real-time decisions. In fact, with our unique dashboard feature, you can manage your entire business from one simple screen. We also offer:

Smooth implementation. At Global Shop, our expert staff has a deep understanding of manufacturing processes. To ensure that you achieve immediate and lasting results, we lead you through a four-step implementation process that includes preparation, data conversion, comprehensive training and going live. Our friendly, experienced FastStart™ consultants are with you every step of the way to provide answers, facilitate ongoing training and ensure that your Global Shop Solutions implementation is a complete success.

Wall-to-Wall Support. Through our knowledgeable staff, we offer the Global Shop FastStart™ Training and Support System, the industry's most comprehensive programs of certified training, support, and customer service.

These programs include:

FastStart™ Consultants. All of our FastStart™ Consultants have been trained to answer emails and telephone calls for immediate and/or quick response. FastStart™ Consultants are also available for travel to your facility to share their expertise in specific training/service areas of your choice.

FastStart™ Training. Our thorough and ongoing FastStart™ training classes are available on a regularly scheduled or as-needed basis for your convenience.

FastNet™ Virtual Training. Global Shop's online FastNet™ classes over the Internet enable employees to review the basics, learn new modules, and explore new ways to use the software to improve personal productivity from the convenience of their desktop.

FastHelp™. Global Shop's comprehensive and easy-to-use FastHelp™ provides answers to your questions within Global Shop on your PC. FastHelp™ is continuously updated so you're never without the latest FastHelp™ information.

FastRespond™. Global Shop's automated telephone support lines are staffed at The Woodlands, TX, corporate headquarters by FastRespond™ customer service representatives who route your call to the GS ServiceWeb for quick answers.

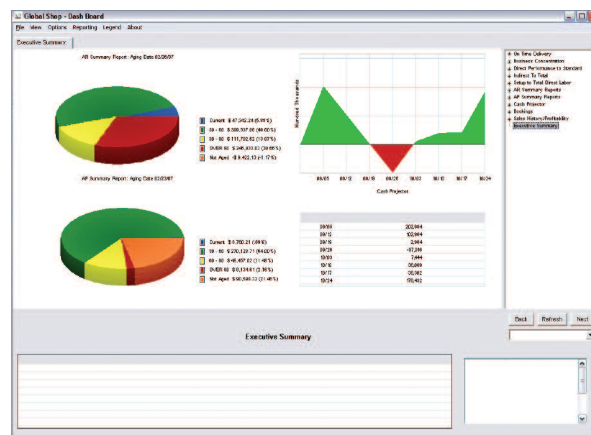
FastFacts™. Global Shop's digital newsletter, *The Globe*, contains FastFacts™ service tips to help you streamline even more of your business processes.

Proven results. Global Shop Solutions leads the industry with successful implementations in a variety of manufacturing environments. Our powerful software integrates every step of the manufacturing process into one easy-to-use system that lowers setup costs, shortens cycle times, increases on-time delivery, reduces labor and materials costs and improves productivity. You'll make better decisions on the shop floor and in management meetings, and achieve leaner, more efficient operations for lasting improvements to your bottom line. Whether you have 10 or 1000+ employees, Global Shop Solutions puts you in total control of your business.



To learn more about how Global Shop Solutions can streamline your business for success, visit our website at www.globalshopsolutions.com and download your free white paper, "Get ERP Right the First Time."

For a free, no obligation demonstration of Global Shop Solutions software, call 800.364.5958 today!



Global Shop Solutions' powerful dashboard feature puts all the information you need to run your business in one simple, easy-to-read screen.

Global Shop Solutions

975 Evergreen Circle,
The Woodlands, Texas 77380
800.364.5958

www.globalshopsolutions.com

Designed to **Streamline™**

GLOBAL SHOP
SOLUTIONS